

GREENPANEL
MDF KA DOOSRA NAAM

— Pre-laminated MDF —

Classic

R A N G E

Picture Perfect

Furniture made with
Greenpanel pre-laminated MDF,
is worth a thousand click.



About Greenpanel

Greenpanel is India's largest manufacturer of wood panels. Medium-Density Fibreboard (MDF) is our flagship product and we are the undisputed leaders and innovators of this category. Our state-of-the-art plants in Uttarakhand and Andhra Pradesh, with an annual combined capacity of more than 660,000 cubic metres, produce world-class MDF, Pre-Laminated MDF, Plywood and Wooden Flooring.

Greenpanel Pre-laminated MDF

Greenpanel Pre-laminated MDF boards are extremely durable with outstanding dimensional stability which can transform your home and office décor. Pre-laminated MDF comes in a range of stylish, decorative designs in solid colors, fabric and wood grain patterns. These boards are resistant to moisture and hence are highly suitable in all weather conditions.



Wood Grain

The timeless beauty of nature is accentuated with Greenpanel's range of Wood Grain Pre-laminated MDF. The evergreen perfection will make a permanent impression on your interiors.



English Wood 2203

NEW



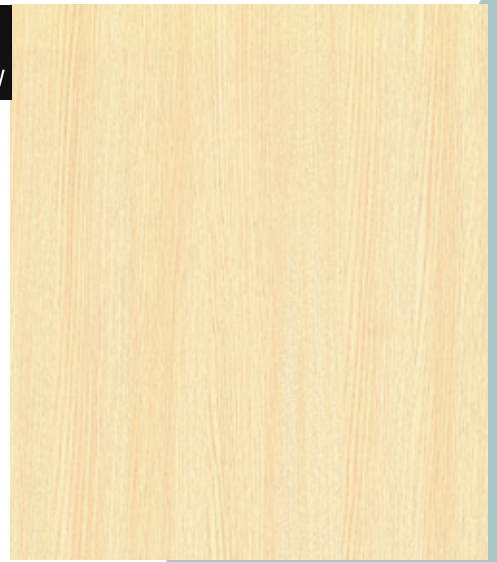
Mellow Oak 2506

NEW



Umber Oak 2507

NEW



Majestic Oak 2505



Canyon White Oak 2503



Canyon Dusk Oak 2504



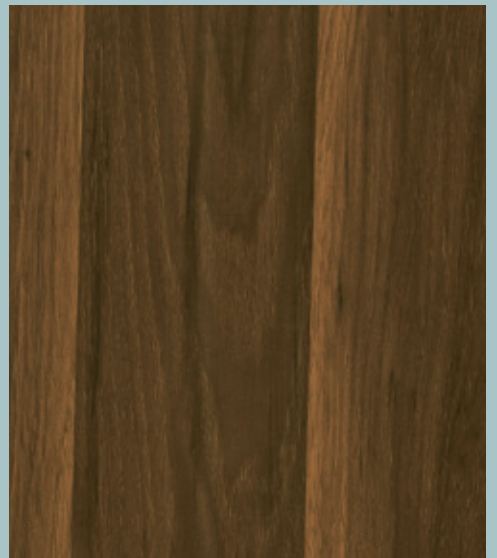
Caribbean Walnut 2011



New River Oak Light 2502



New River Oak Dark 2501



Planked Walnut 2803

NEW



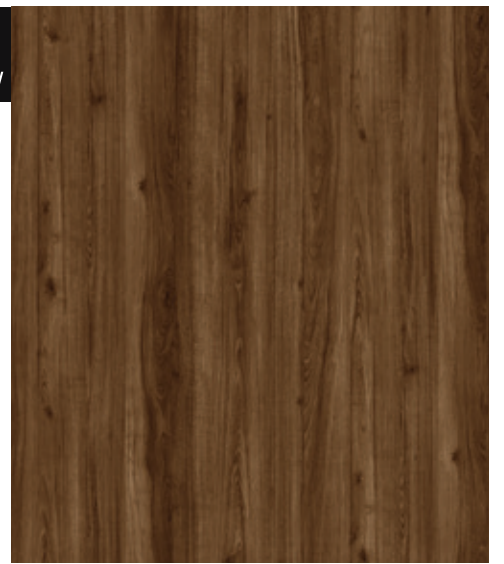
Georgia Walnut 2807

NEW



Sahara Walnut 2808

NEW



Latin Walnut 2809



Victorian Amber Walnut 2805



Victorian Smoked Walnut 2806



Persian Walnut Light 2801



River Wood 2017



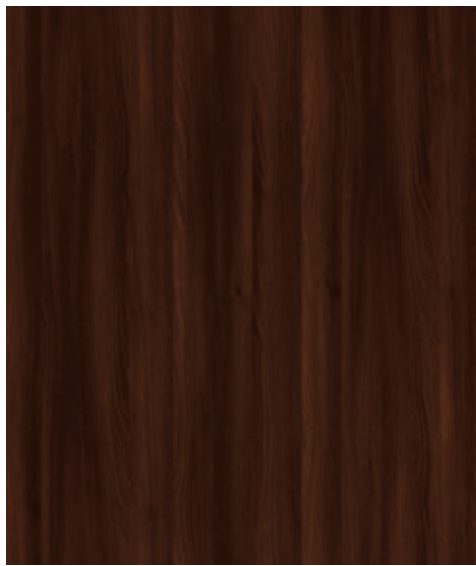
River Wood Dark 2018



Persian Walnut Brown 2802



Acacia Light 2009



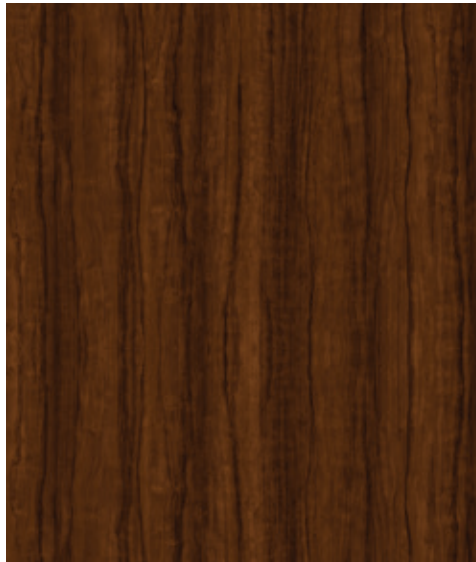
Acacia Dark 2005



English Wood 2203



Savanna Gold 2201



Amazon Symphony 2202



Highland Pine 2001



Natural Wenge 2007



Vintage Wenge 2002



Charcoal Wenge 2021



Classic Sapeli 2003



Natural Mahogany 2004



Grand Nayana Teak 2006



Classic Bavarian Beech 2008



Rosewood 2015



Oxford Cherry 2016



Checquered Wood Light 2014



Checquered Wood Dark 2013



Imperial Oak 2010



Cambric Light 2051

Fabrics

Inspired by the pattern of the fabric, these stylish Pre-laminated MDF add an everlasting impression to your living spaces.

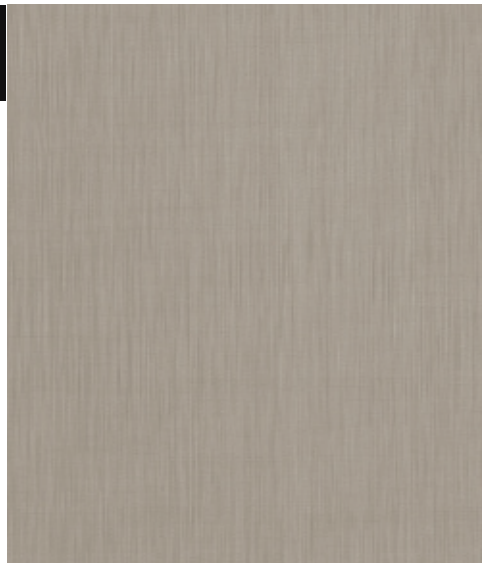


NEW



Linen Grey 2057

NEW



Linen Brown 2058



Fab Oriental Sand 2055



Fab Pearl 2053



Fab Pearl Dark 2054



Fab Ivory 2056



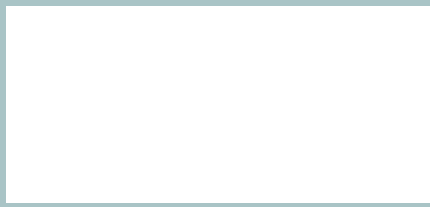
Cambric Light 2051



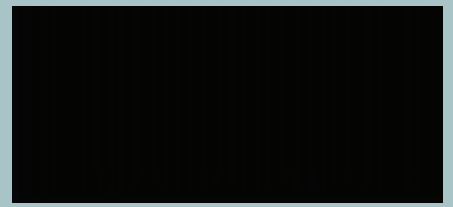
Cambric Dark 2052



Light Grey 2108



Classic White 2101



Classic Black 2103



Classic Off White 2102



Classic Red 2105



Classic Blue 2104



Light Grey 2108

Classic White 2101

REC

Technical Specifications				
S.NO.	TEST	UNIT	PRE-LAMINATED MDF BOARD VALUES***	
			EXTERIOR	INTERIOR
1	Density	Kg/m ³	600-900	600-900
2	Density variation (Max)	%	± 10	± 10
3	Moisture content	%	5-10	5-10
4	Variation from mean moisture content (Max)	%	± 3	± 3
5	Thickness swelling in 24 hrs (Max) #	%	6-35	6-45
6	Modulus of rupture (Min)	N/mm ²		
	a. Upto 20 mm thickness (Average)		22-27	18-23
	b. Above 20 mm thickness (Average)		15-22	15-18
7	Modulus of elasticity (Min)	N/mm ²		
	a. Upto 20 mm thickness (Average)		2300-2800	2100-2800
	b. Above 20 mm thickness (Average)		1900-2300	1700-2100
8	Internal bond strength (Min)	N/mm ²		
	a. Upto 20 mm thickness		0.60-0.70	0.55-0.65
	b. Above 20 mm thickness		0.50-0.60	0.50-0.55
9	Internal bond strength (Min)	N/mm ²		
	a. After cyclic test		0.10-0.35	N/A**
	b. After AWR*		0.10-0.20	N/A**
10	Screw withdrawal strength (Min)	N		
	a. Face		1250	1250
	b. Edge (>12.0mm)		850	700
11	Surface abrasion resistance (Min)	No. of Revolutions		
	a. Type-I		1000	1000
	b. Type-II		450	450
	c. Type-III		250	250
	d. Type-IV		75	75
12	Resistance to steam/water vapours	-	No blister, delamination or change in surface finish	
13	Resistance to crack	-	No sign of crack or delamination	
14	Resistance to stain	-	No stain on the specimen after cleaning with water solvent or detergent	
15	Resistance to cigarette burn	-	No mark or stain on the specimen after cleaning with water or solvent	
16	Formaldehyde content (F _C)	mg/100 g for oven dry board	Formaldehyde class E1: F _C ≤ 8 Formaldehyde class E2: 8 < F _C ≤ 30	

AWR* = Accelerated Water Resistance
N/A** = Not Applicable

According to the MDF's thickness
***Values in accordance with the draft IS 14587:2022 (yet to be published)

Size: 2440mm x 1220mm | 2440 mm x 1830mm

Thickness Available

Uttarakhand Plant

Caters to Delhi, Haryana, U.P., Uttarakhand, J&K, H.P., Punjab, Chandigarh, Rajasthan, Gujarat, Bihar, Jharkhand, West Bengal & North East.

Thickness:

Interior Grade: 4.6mm, 5.5mm, 7mm, 7.3mm, 9.75mm, 11mm, 14.5mm, 16.5mm, 17mm, 18mm, 25mm & 30mm

Exterior Grade: 5.5mm, 7.5mm, 11mm, 16.5mm, 17mm, 25mm & 30mm

Club HDWR: 5.5mm, 8mm, 12mm, 16mm, 16.75mm, 18mm & 25mm

FRMDF: 12mm & 18mm

FRMDF CLUB: 12mm & 18mm

Andhra Pradesh Plant

Caters to Andhra Pradesh, Karnataka, Tamil Nadu, Kerala, Odisha, Madhya Pradesh, Chhattisgarh & Maharashtra

Thickness:

Interior Grade: 5.5mm, 7mm, 7.3mm, 9.75mm, 11mm, 12mm, 14.5mm, 16mm, 16.5mm, 17mm, 18mm, 25mm & 30mm

Exterior Grade: 5.5mm, 7.5mm, 11mm, 12mm, 16.5mm, 17mm, 18mm, 25mm & 30mm

Club HDWR: 3.3mm, 5.5mm, 8mm, 12mm, 16mm, 16.75mm & 18mm & 25mm

Exterior Commercial: 16.5mm

FRMDF: 12mm & 18mm

FRMDF CLUB: 12mm & 18mm

For further details on thickness and availability, please contact our local sales office.

GP/PLVCL/07/2023

Advantages of Greenpanel Pre-laminated MDF

 Emission Level E1, E2	 German Machinery	 Exclusive Design Range	 Imported Decor Papers	 Superior Abrasion Resistant	 Resistant to Steam	 Resistant to Crack, Scratch and Stains	 Wide Distribution Network	 Strong & Durable
--	---	---	--	--	--	---	--	---



ISO 9001:2015, ISO 45001: 2018, FSC, CARB, EPA, CE and Green building certificates international standard. Greenpanel Industries Limited environment is managed according to ISO 14001:2015 international environmental management systems standard. This embodies our commitment to pursuing a path of continual improvement in environmental management.



Greenpanel Industries Limited
3rd Floor, Plot No. 68, Sector 44, Gurugram 122003, Haryana.
T +91-124-4784600
(Monday to Friday except holidays 10 am to 5 pm)
Regd. Office: Thapar House, 2nd Floor, 163, S.P. Mukherjee Road,
Kolkata, West Bengal - 700026 Tel No : +91 33 4084 0600
CIN L20100AS2017PLC018272

www.greenpanel.com
E info@greenpanel.com
Toll Free No. 1800-102-2999

Connect with us on
   

Scan the QR Code



to view the website